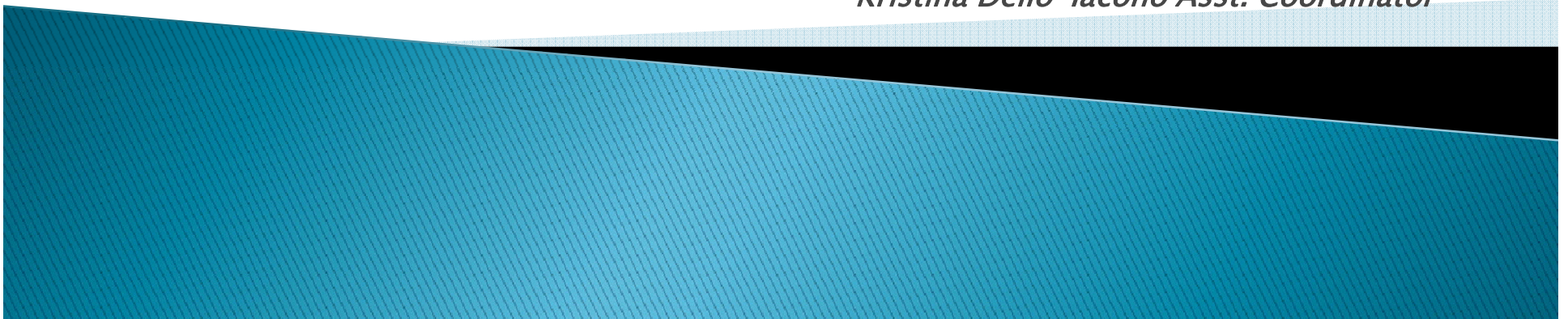


Milford High School Pathways Program

Paving a Path to Success

Steve DiVitto–Coordinator

Kristina Dello–Iacono Asst. Coordinator



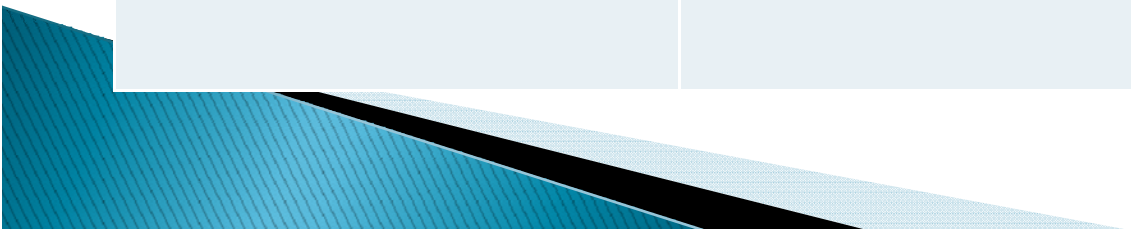
PROGRAM MISSION

- ▶ The MHS Pathways Program understands that the “traditional” high school learning environment may not meet the needs of all students.
- ▶ Students may have had past difficulties related to attendance/truancy, and additional struggles in the traditional academic environment.
- ▶ The PATHWAYS program believes in the inherent worth of each student. PATHWAYS takes an individualized approach to meet the student’s academic and social needs.
- ▶ PATHWAYS teaches students social and life skills through community internship opportunities and by providing individual and group counseling.
- ▶ Family involvement is an essential aspect of the program. PATHWAYS works with families to ensure appropriate outside support services are in place.



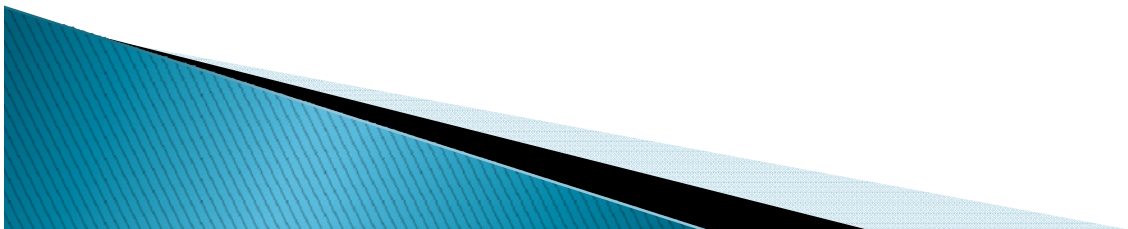
Identifying & Monitoring Students

Risk Indicator	Timeframe	Flagged
Attendance	End of each grading period (term/semester)	10% or more of instructional time missed
Course Failures	Each grading period	Failed one or more courses in any core subject
Conduct Referrals	End of year	Communication with administration identifying students with classroom behavior/organization
End of Year Indicator	End of year	Current freshman holding less than 20 credits/Failing two or more core courses



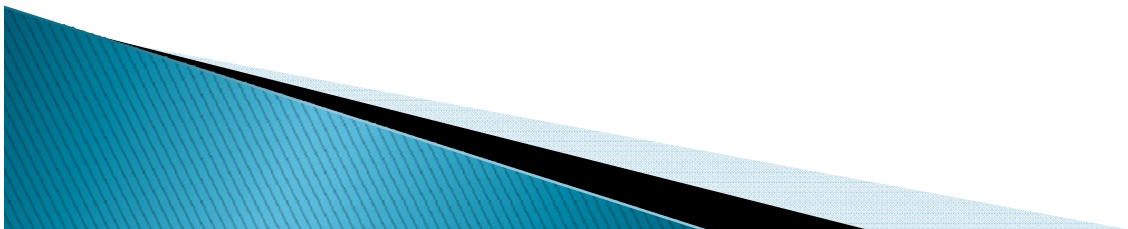
Referral Process

- ▶ Teachers, guidance counselors, administrators, and guardians may request that a student be considered for the PATHWAYS program.
- ▶ A referral is made to the MHS Student Intervention Team (SIT), which meets weekly to discuss and implement interventions for struggling students.
- ▶ If the team feels the student may be a candidate, Administrative approval is then needed for the next step.
- ▶ When a referral is approved, the PATHWAYS coordinators contact the student and parent/guardians to inform them of the expectations of the program.
- ▶ A meeting then takes place with the student and family to ensure the program is a good fit.



ALTERNATIVE CLASSROOM EDUCATION

- ▶ PATHWAYS alternative approach to learning includes:
- ▶ Co-Teaching Model
- ▶ Use of APEX Learning Software in conjunction with classroom instruction
- ▶ Project Based Learning
- ▶ Differentiated Instruction Opportunities
- ▶ Certified Special Education and Core Academic Teachers
- ▶ Certified Guidance & Career Counselor
- ▶ In-School and Off-Site Internship Opportunities
- ▶ Credit Recovery opportunities through APEX Learning Software



RTI & Pathways

- Response to Intervention takes a tiered intervention approach to supporting students both academically and socio-emotionally
- Students in Pathways may be receiving Tier II services via Apex credit recovery and classes taken in the general education environment, or Tier III services including both Apex and core courses taken within the Pathways setting
- Tier II services for emotional support may include group meeting times, while Tier III interventions for emotional support may include individual counseling services via an IEP/504
- All students receive on-going progress monitoring, analysis and reflection



Pathways Sample Schedule (Gr. 12)

	Day 1	Day 2	Day 3	Day 4	Day 5	Day 6	Day 7
1 7:50 – 8:50 (56+3 min HR)	A English 3 (Pathways)	B Indep. Study (Pathways) (Italian Project)	A English 3 (Pathways)	A English 3 (Pathways)	A English 3 (Pathways)	A English 3 (Pathways)	A English 3 (Pathways)
2 8:54 – 9:50	B Indep. Study (Pathways) (Italian Project)	C Concepts of Chemistry (Pathways)	C Concepts of Chemistry (Pathways)	D Algebra 2 (Pathways)	E Internship w/ Vocational Program	F Principles of Finance (Pathways)	G Co-Op Art Education
3 9:54-10:50	C Concepts of Chemistry (Pathways)	D Algebra 2 (Pathways)	D Algebra 2 (Pathways)	E Internship w/ Vocational Program	F Principles of Finance (Pathways)	G Co-Op Art Education	B Indep. Study (Pathways) (Italian Project)
4 10:50 – 12:20 (2nd LUNCH)	D Algebra 2 (Pathways)	E Internship w/ Vocational Program	E Internship w/ Vocational Program	F Principles of Finance (Pathways)	G Co-Op Art Education	B Indep. Study (Pathways) (Italian Project)	C Concepts of Chemistry (Pathways)
5 12:24 – 1:20	E Internship w/ Vocational Program	F Principles of Finance (Pathways)	F Principles of Finance (Pathways)	G Co-Op Art Education	B Indep. Study (Pathways) (Italian Project)	C Concepts of Chemistry (Pathways)	D Algebra 2
6 1:24- 2:20	F Principles of Finance (Pathways)	G Co-Op Art Education	G Co-Op Art Education	B Indep. Study (Pathways) (Italian Project)	C Concepts of Chemistry (Pathways)	D Algebra 2 (Pathways)	E Internship w/ Vocational Program
	DROP G	DROP A	DROP B	DROP C	DROP D	DROP E	DROP F

FUTURE IMPROVEMENTS OF PATHWAYS

- ▶ CLEAR CUT GUIDELINES/EXPECTATIONS
- ▶ COMMUNITY INTERNSHIPS/WORK STUDY PROGRAMS
- ▶ COLLABORATION WITH ELEMENTARY SCHOOLS FOR MENTORING PROGRAMS
- ▶ CONTINUE TO INCREASE ACADEMIC EXPECTATIONS
- ▶ CONTINUED EMPHASIS ON STUDENT ACCOUNTABILITY & RESPONSIBILITY
- ▶ ATTEMPT TO HAVE MORE COMMON PLANNING TIME FOR TEACHERS

